

BETWEEN RESILIENCE AND VULNERABILITY: EXPERIENCES OF THE NEOLIBERAL ACADEMY

TUESDAY 15TH MAY 2018

09.00 - 17.30

UNIVERSITY OF GLOUCESTERSHIRE

PARK CAMPUS, CHELTENHAM, UK

CALL FOR PAPERS

The concept of resilience in various guises is becoming an increasingly recognizable trope within the contemporary university. From discourses that fit broadly within self-help narratives, whereby increasing the resilience of academic staff is posited as the solution to precarious and stressful working conditions, to the presentation of students who are seen as 'snowflakes,' indicative of a generation somehow inherently lacking in resilience. When read in this light, resilience becomes, as Sara Ahmed has argued: 'a deeply conservative technique, one especially well suited to governance [...]' (Ahmed, 2017) As such, this conference seeks to offer the space to explore character, consequences and possible alternatives to narratives of resilience, grit, and self-efficacy.

Types of paper/presentation invited:

- Lightning papers (5 minutes)
- Short papers (5-10 minutes)
- Long papers (15-30 minutes)
- Poster presentations
- Panel and discussions

CONFERENCE WEBSITE & CONTACT

projectsoftheself.com/conference

beinghumanconference@gmail.com



KEY DATES



150 Word Abstract

Submission Deadline

EXTENDED TO

Friday 27th April 2018

Notification of
Acceptance

Friday 4th May 2018

Registration

Deadline

Friday 11th May 2018

Conference

Tuesday 15th May 2018

REGISTRATION

FEES & PAYMENT

Waged

£30.00

Fractional/Hourly Paid

£15.00

Unwaged/Student

£10.00

Registration and Payment
via Conference Website

KEYNOTE SPEAKER

Dr. Maria do Mar Pereira

Associate Professor
Deputy Director of the Centre for the
Study of Women and Gender
University of Warwick



Destroying Yourself to Protect Yourself?: Paradoxes of Vulnerability in the Hyper-Productive University

Maria do Mar Pereira is an Associate Professor in the Department of Sociology at the University of Warwick, and the Deputy Director of Warwick's Centre for the Study of Women and Gender. Her first book – *Doing Gender in the Playground: the Negotiation of Gender and Sexuality in Schools* – was published in 2012 and received the ICQI Award for Best Qualitative Book in Spanish or Portuguese (2010-2014). Her second book – *Power, Knowledge and Feminist Scholarship: an Ethnography of Academia* – was published in 2017 by Routledge and received a Philip Leverhulme Prize. She is an editor of the journal *Feminist Theory* and tries (not always successfully or resiliently) to juggle all of the above with sanity, parenting and involvement in feminist activism.

CONTACT

projectsoftheself.com/conference
beinghumanconference@gmail.com

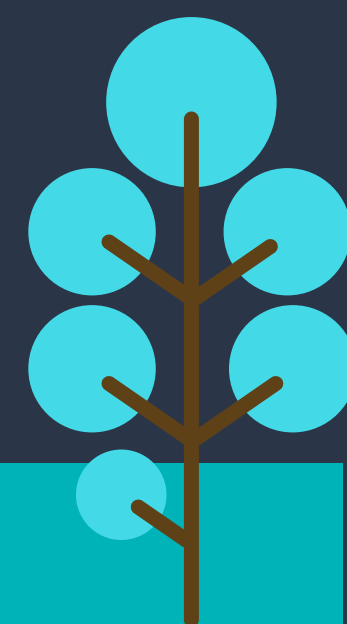
REGISTRATION

projectsoftheself.com/conference

CONFERENCE THEMES:



- Resilience as it relates to academic precarity
- Discourses of power and vulnerability within Higher Education
- Narratives of self efficacy in Higher Education
- Resilience as a gendered discourse
- Discourses of resilience relating to notions of agency and empowerment
- Situating vulnerability with HE
- Deficit models of students, i.e. millennials as snowflakes, lacking grit, resilience, etc.
- Mindfulness, Growth Mindset and Self-Management
- Resilience training as a solution to mental health crisis
- Resilience as a naturalizing discourse that obscures persistent inequalities



About the Conference

The conference aims to bring together scholars at various stages of the academic life course. Established academics, student researchers and early career colleagues are all warmly invited. The conference seeks to provide a space for both academic discussion and space for informal exchange of ideas. The flexible programme will include time and space for interactions outside of sessions, and colleagues are encouraged to seek opportunities to engage in future collaborative work around emergent conference themes.

The Park Campus, Cheltenham, is well served by local rail and bus routes, and parking is plentiful. Refreshments and lunch will be provided throughout the day. Whilst the University is unable to provide crèche facilities, a space will be made available with amenities for colleagues with children. Please ask for more information upon registration.

CONTACT

projectsoftheself.com/conference
beinghumanconference@gmail.com

REGISTRATION

projectsoftheself.com/conference